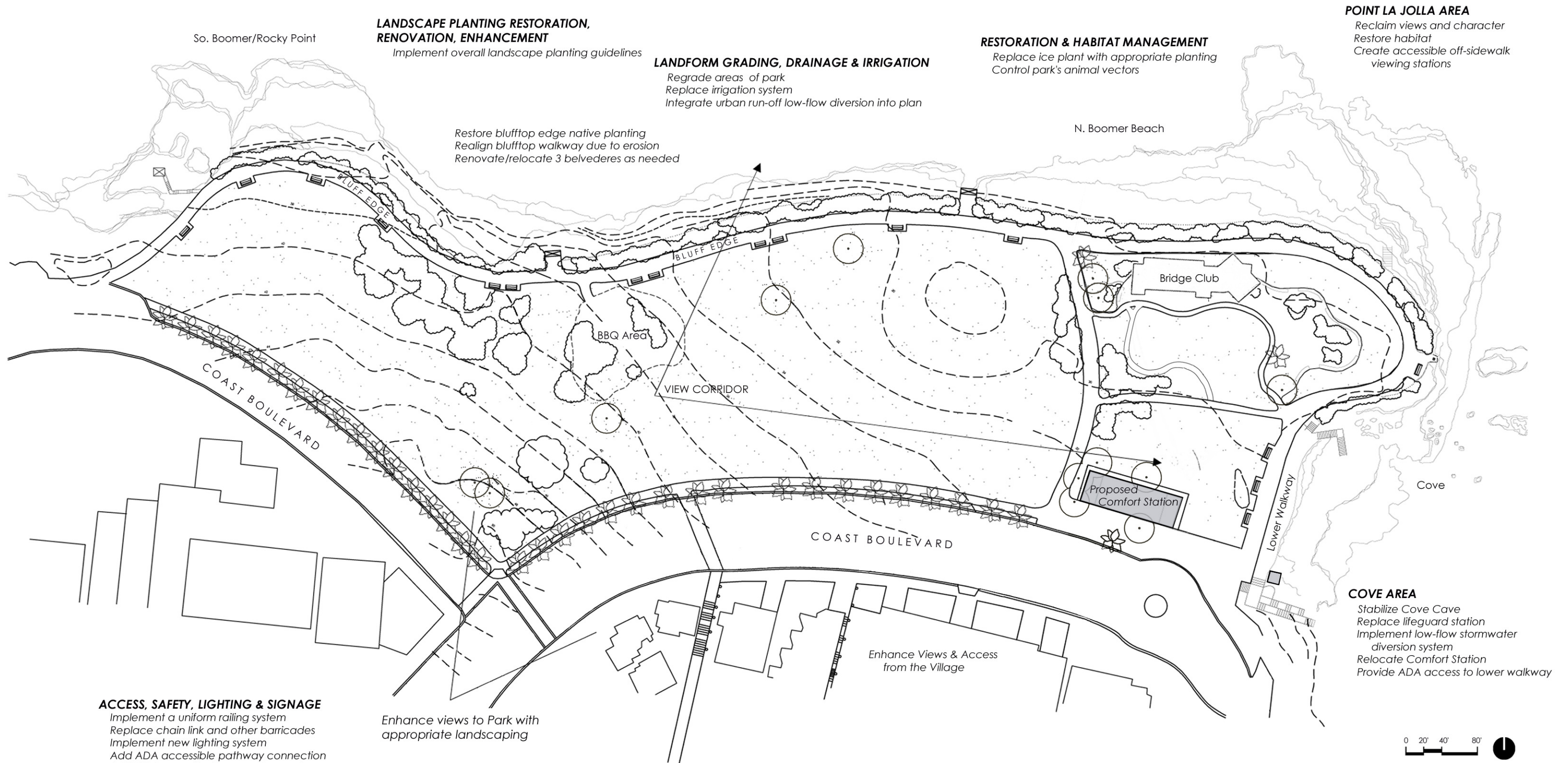


SCRIPPS PARK PLAN

Preserve Park as a Work of Art; restore and improve views and enhance public access
 Preserve, protect and enhance natural landscapes
 Ensure compatible future design with natural environment, historical landscape and institute sustainable design practices
 Secure funding to implement Plan

"...an environmental and ecological resource of worldwide significance."



LANDSCAPE PLANTING RESTORATION, RENOVATION, ENHANCEMENT
 Implement overall landscape planting guidelines

LANDFORM GRADING, DRAINAGE & IRRIGATION
 Regrade areas of park
 Replace irrigation system
 Integrate urban run-off low-flow diversion into plan

RESTORATION & HABITAT MANAGEMENT
 Replace ice plant with appropriate planting
 Control park's animal vectors

POINT LA JOLLA AREA
 Reclaim views and character
 Restore habitat
 Create accessible off-sidewalk viewing stations

Restore blufftop edge native planting
 Realign blufftop walkway due to erosion
 Renovate/relocate 3 belvederes as needed

N. Boomer Beach

Bridge Club

BBQ Area

VIEW CORRIDOR

Proposed Comfort Station

Cove

Lower Walkway

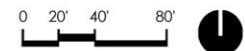
COAST BOULEVARD

Enhance Views & Access from the Village

COVE AREA
 Stabilize Cove Cave
 Replace lifeguard station
 Implement low-flow stormwater diversion system
 Relocate Comfort Station
 Provide ADA access to lower walkway

ACCESS, SAFETY, LIGHTING & SIGNAGE
 Implement a uniform railing system
 Replace chain link and other barricades
 Implement new lighting system
 Add ADA accessible pathway connection
 Add ADA-compliant companion seating
 Relocate/redesign signage

Enhance views to Park with appropriate landscaping



ELLEN BROWNING SCRIPPS MEMORIAL PARK General Development Plan

Campbell & Campbell
 Architects Landscape Architects Planners
 10951 W. Pico Blvd., Suite 120 Los Angeles, CA 90064

Refer to Scripps Park Plan for Design Guidelines