

CITY OF SAN DIEGO COAST WALK BOULEVARD

WBS# B-10824

BASIS OF BEARINGS

BEARINGS ARE REFERENCED TO GRID NORTH AS DEFINED BY THE CALIFORNIA COORDINATE SYSTEM 1983, ZONE 14, EPOCH 1991.35 AND ARE BASED ON THE CALCULATED LINE FROM GPS POINT 707 TO GPS POINT 710 PER ROS 14492, UTILIZING RTK/GPS FIELD PROCEDURES.

BENCHMARK

ELEVATIONS SHOWN ARE ON THE NGVD29 DATUM, DETERMINED LOCALLY BY BENCHMARK AT THE NORTHWEST CORNER OF THE INTERSECTION OF TORREY PINES RD. AT PRINCESS ST. PER CITY OF SAN DIEGO BENCH BOOK, NGVD29 EL: 92.029.



THIS PLAT WAS PREPARED BY ME OR UNDER MY DIRECTION IN CONFORMANCE WITH THE PROFESSIONAL LAND SURVEYOR'S ACT ON JUNE 4, 2021.

JAMES R. NICOLAU IV L.S. 9238

SURVEYOR'S NOTES

THE BOUNDARY LINES (P'S) SHOWN HEREON ARE PER RECORD MAPPING DATA, AND FOR REFERENCE ONLY. ADDITIONAL STREET DEDICATIONS OR VACATIONS SUBSEQUENT TO SAID MAPS ARE NOT SHOWN.

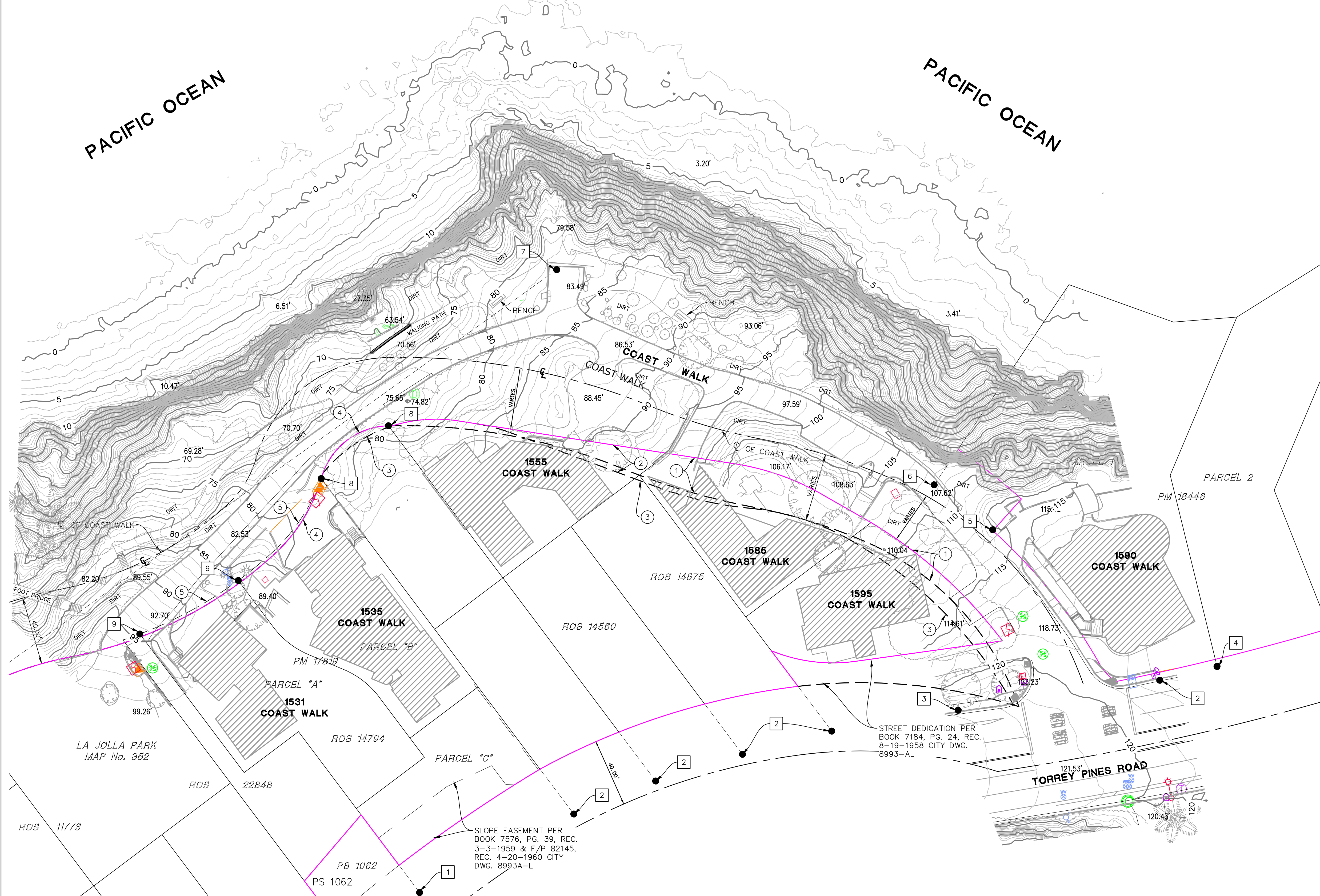
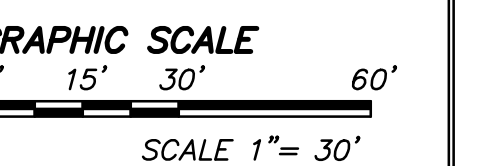
- 1 STREET VACATION PER CITY RESOLUTION No. 27213, PER ROS No. 14560.
- 2 STREET VACATION PER CITY RESOLUTION No. 27213, PER CITY DWG. 10101-B.
- 3 ORIGINAL RIGHT-OF-WAY PER PRIVATE SURVEY No. 236 & CITY DWG No. 10101-B.
- 4 RIGHT-OF-WAY PER ROS No. 14560.
- 5 LOT LINE PER PARCEL MAP No. 17819.

MONUMENT NOTES

- 1 FOUND LEAD & DISC STAMPED "LS 8733" PER ROS No. 22848.
- 2 FOUND LEAD & DISC STAMPED "LS 4830" NO RECORD.
- 3 FOUND LEAD & DISC STAMPED "SD CITY ENG." PER CR 30165.
- 4 FOUND NAIL & DISC STAMPED "LS 8012" PER CR 37011.
- 5 FOUND 3/4" IP W/ TAG ILLEGIBLE, ACCEPTED AS MONUMENT FROM PM No. 18446.
- 6 FOUND SPIKE & WASHER STAMPED "LS 4620" PER PM No. 18446.
- 7 FOUND 3/4" IP W/ TAG STAMPED "LS 4830" PER PM No. 18446.
- 8 FOUND 3/4" IP W/ TAG STAMPED "LS 4830" NO RECORD.
- 9 FOUND 3/4" IP W/ TAG STAMPED "RCE 8195" PER PM No. 17819.

LEGEND

- STREET LIGHT
- ELECTRIC PULLBOX
- ELECTRIC METER
- GAS METER
- MAILBOX
- TELEPHONE PULLBOX
- TELEPHONE RISER
- TELEPHONE MANHOLE
- STORM DRAIN MANHOLE
- SEWER MANHOLE
- SEWER CLEANOUT
- WATER METER
- WATER VALVE
- FIRE HYDRANT
- TREE
- ASPHALT CONCRETE SURFACE (AC)
- CONCRETE SURFACE
- DIRT WALKING PATH
- RIGHT OF WAY



DATE: 7/2/21	TIME: 12:15:03 PM	NO.	BY	DATE	REVISIONS:
SERVER: NONE	LAYOUT: Layout1				
DRAWING NAME: 674-10_TOPO_EXHIBIT.DWG					
PAGE SETUP: ---					
DESIGNER: AMP PROJ. MGR: PWS					

NIV5

15092 AVENUE OF SCIENCE, SUITE 200
SAN DIEGO, CA 92128
P: 858.385.0500 WWW.NIV5.COM

TOPOGRAPHIC SURVEY

COAST WALK IMPROVEMENTS
1525-1595 Coast Walk, La Jolla, CA 92037

PREPARED FOR: CITY OF SAN DIEGO TRANSPORTATION & STORM WATER DEPT

DATE SUBMITTED: 6-4-2021

SHEET NUMBER	1
OF	1 SHEETS
SCALE	VERTICAL: 1" = N/A HORIZONTAL: 1" = 30'
JOB NUMBER	19-0000674.10