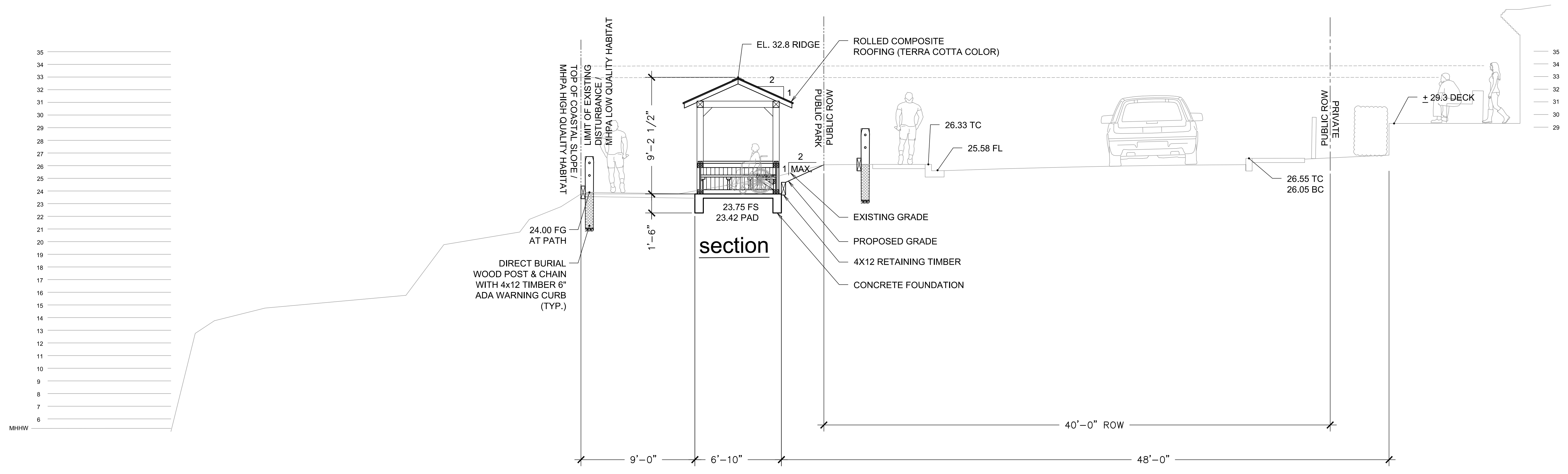
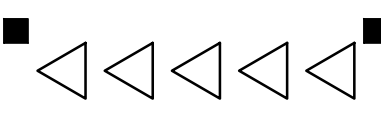
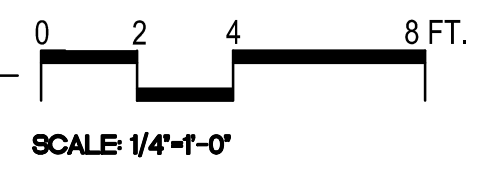


ALL PLANS, DESIGNS AND IDEAS SHOWN ON THIS DRAWING ARE THE PROPERTY OF NERI LANDSCAPE ARCHITECTURE AND SHALL NOT BE USED, DISCLOSED OR REPRODUCED BY ANY PERSON, FIRM OR CORPORATION FOR ANY PURPOSE WITHOUT WRITTEN CONSENT FROM NERI LANDSCAPE ARCHITECTURE.

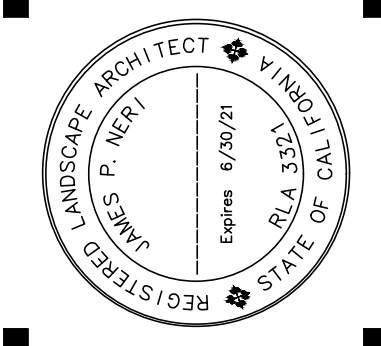


A LOOKING NORTH SECTION



Project No. - XX
 Drawn - XXX
 Checked - JPN

NLA
NERI LANDSCAPE ARCHITECTURE
 928 HORNBLAND STREET, SUITE # 3
 SAN DIEGO, CA 92109
 WWW.NERILANDSCAPE.COM
 TEL: 619.596.7432 FAX: 619.596.7432



LANDSCAPE IMPROVEMENT PLANS FOR
WINDANSEA BEACH
SLOPE PROTECTION
 Neptune Place between
 Palomar Avenue and Westbourne Street
 La Jolla, CA 92037

PTS-0666879
 FOR APPROVAL
 OCTOBER 28 2020

BELVEDERE
 RECONSTRUCTION