

EXHIBIT "B"

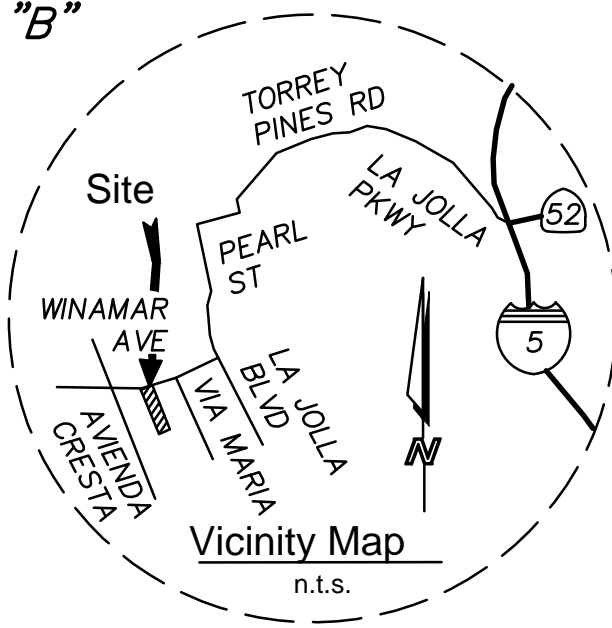
LEGEND

 INDICATES PORTION OF 8' WIDE PUBLIC UTILITY EASEMENT IN BLOCK 5, MAP NO. 3353 VACATED 915 SQ.FT.(0.021 ACRE).

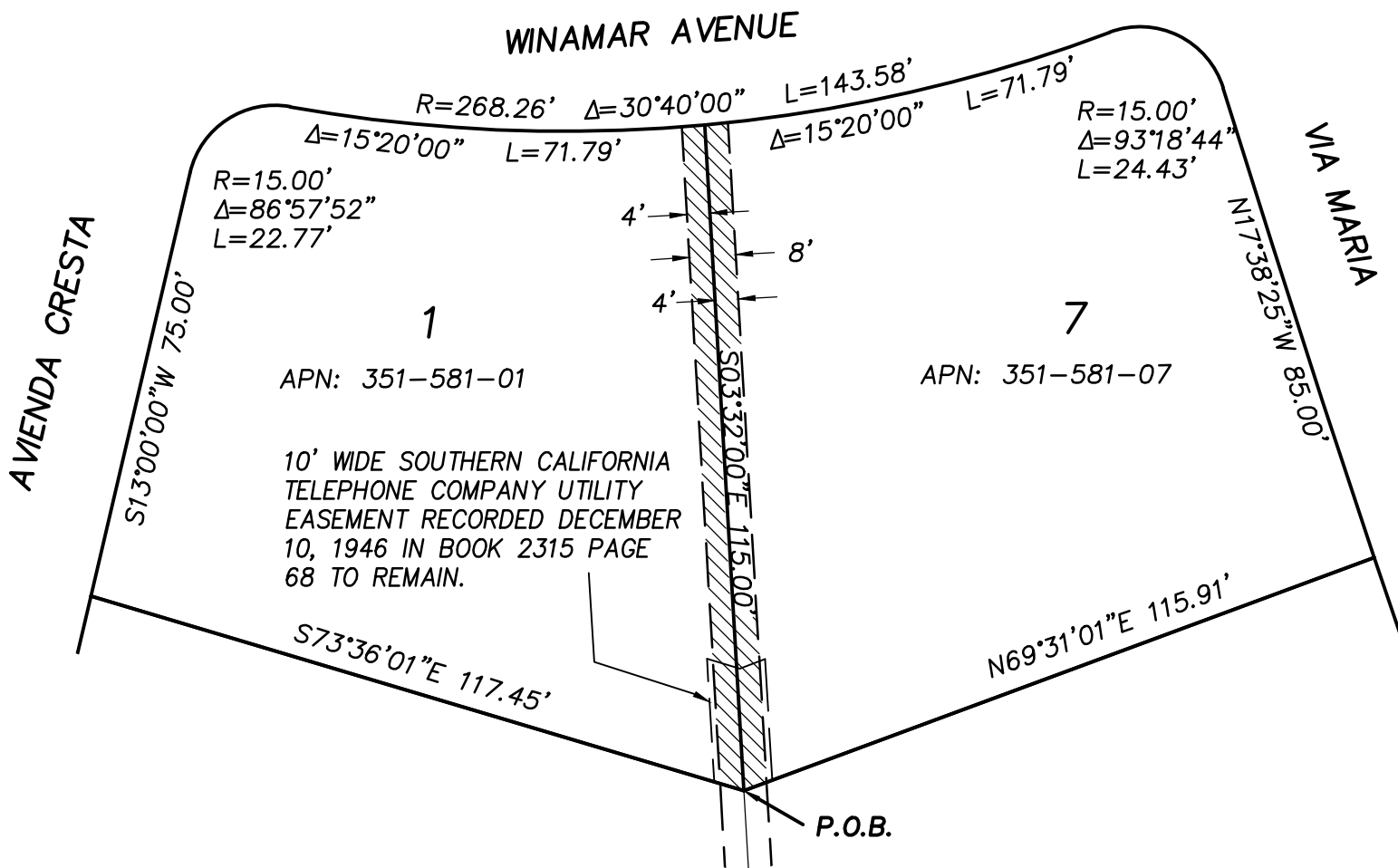
P.O.B. INDICATES POINT OF BEGINNING

REFERENCE DWGS.

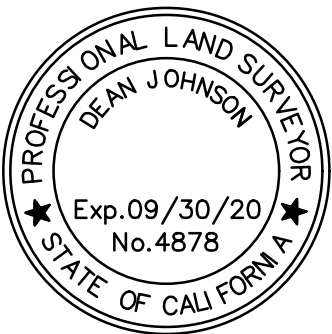
MAP NO. 2353



SCALE: 1" = 30'



BLOCK 5, MAP NO. 2353



THE BASIS OF BEARINGS FOR THIS SURVEY IS THE COMMON PROPERTY LINE OF LOTS 1 AND 7 BLOCK 5, MAP NO. 2353. BEARING: S 3°32'00"E.

LANDMARK CONSULTING
9555 GENESEE AVENUE, SUITE 200
SAN DIEGO, CA 92121
(858) 587-8070

DEAN JOHNSON DATE: PLS 4878

RESOLUTION NO.: _____
DATED _____
ADOPTED: _____
DOCUMENT NO.: _____
RECORDED: _____

PUBLIC UTILITY VACATION

8' WIDE UTILITY EASEMENT ALONG COMMON LINE BETWEEN LOTS 1 AND 7 BLOCK 5 OF MAP NO. 2353

DESCRIPTION	BY	APPROVED	DATE	FILMED	CITY OF SAN DIEGO, CALIFORNIA	I.O.
ORIGINAL	L.C.				SHEET 1 OF 1 SHEET	N/A
					FOR CITY LAND SURVEYOR	667263
					DATE	1878-6244
						CCS 83 COORDINATES
						238-1683
						LAMBERT COORDINATES
					STATUS	