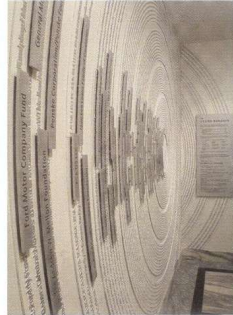


GOALS & OBJECTIVES

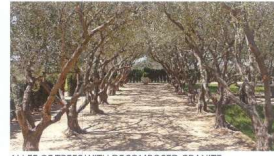
- SET UP A MASTER PLAN THAT CAN BE BUILT IN PHASES OVER TIME
- MAKE THE RECREATIONAL CENTER & GROUNDS A TRUE COMMUNITY CENTER
- APPRECIATE & UNDERSTAND THE HISTORY OF THE SITE AND PLACE
- REPROGRAM THE PROPERTY TO MAKE IT MORE USEABLE AND PROGRESSIVE
- PROVIDE ACTIVITIES AND PLACES FOR MULTIPLE GENERATIONS OF USERS
- CREATE SHADY AREAS FOR SEATING AND PLAY SPACES



BOCCE COURT



SPONSOR WALL



ALLEE OF TREES WITH DECOMPOSED GRANITE



OUTDOOR DINING: CAFE



WATER ELEMENT AT TOT LOT



VEGETABLE GARDEN



SUNKEN BASKETBALL/ TENNIS COURT



SPONSOR WALL



PLAY STRUCTURES



PLAY STRUCTURES



HISTORY WALL / PATHWAYS (EXAMPLE)

IDEAS AND EXAMPLES
LA JOLLA RECREATIONAL CENTER ENHANCEMENT PLAN: PICTURES, GOALS & OBJECTIVES

Materia

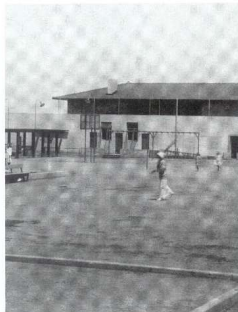
Trace Wilson, Architect

Architecture Urbanism Landscape Planning Development

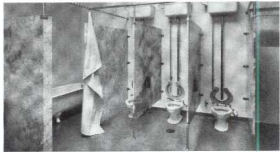
twilson@materia-llc.com
 T. 310.903.2635



AUDITORIUM



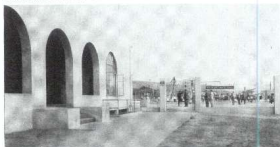
ORIGINAL PLAYGROUND



ORIGINAL BATHROOM FACILITIES



GRAND OPENING / DEDICATION CEREMONY



ENTRY TO PLAYGROUND FROM PROSPECT



BILLIARD'S ROOM



VIEW FROM DRAPER



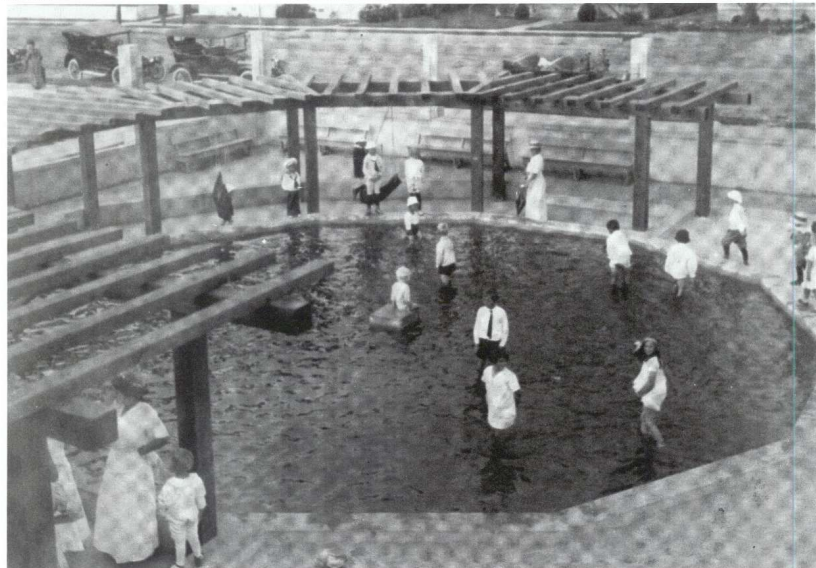
READING ROOM



AUDITORIUM



VIEW FROM PROSPECT



ORIGINAL WADING POOL AND TRELLIS

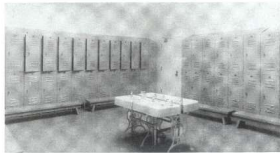
HISTORIC PHOTOGRAPHS
LA JOLLA RECREATIONAL CENTER ENHANCEMENT PLAN: PICTURES, GOALS & OBJECTIVES

Materia

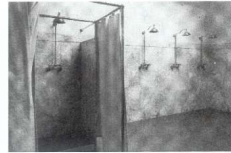
Trace Wilson, Architect

Architecture Urbanism Landscape Planning Development

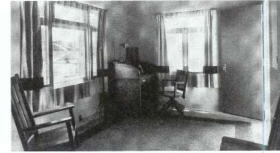
twilson@materia-lc.com
t: 310.903.2635



BOYS LOCKER ROOM



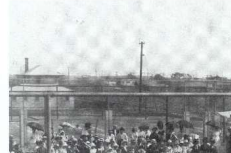
BOYS-MEN SHOWERS



DIRECTOR'S OFFICE



CLUB ROOM



FOLK DANCING



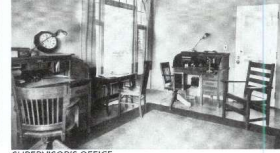
SUPERVISOR'S RESIDENCE



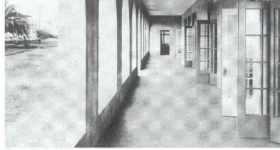
DANCING ON THE COURTS



FOLK DANCING



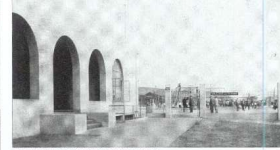
SUPERVISOR'S OFFICE



NORTH PORCH



ORIGINAL PLAYGROUND



WEST VIEW AND MAIN ENTRANCE



SCRIPPS ESTATE AND WOMAN'S CLUB



ORIGINAL PLAYGROUND



HISTORIC PHOTO: DROP OFF ON CUVIER ST.



RECREATION CENTER CIRCA 1933

HISTORIC PHOTOGRAPHS
LA JOLLA RECREATIONAL CENTER ENHANCEMENT PLAN: PICTURES, GOALS & OBJECTIVES

Materia

Trace Wilson, Architect

Architecture Urbanism Landscape Planning Development

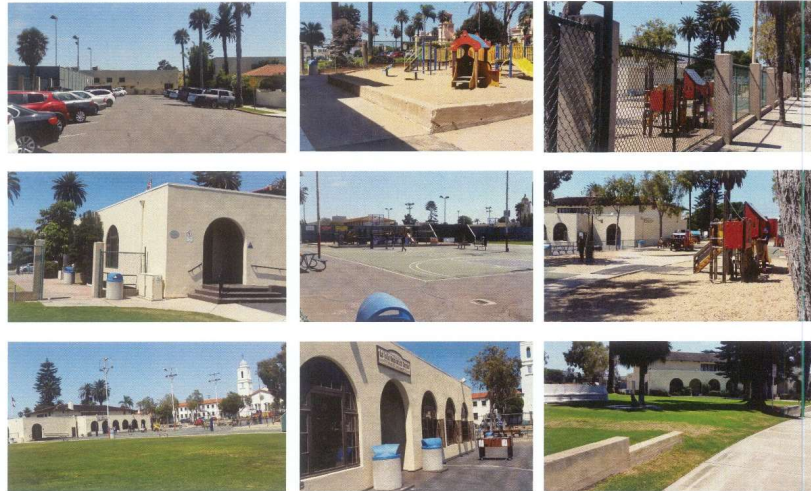
twilson@materia-lc.com
t. 310.903.2835



THE BISHOP'S SCHOOL



LA JOLLA WOMAN'S CLUB



LA JOLLA RECREATION CENTER (EXISTING)

ADJACENT NEIGHBORS
LA JOLLA RECREATIONAL CENTER ENHANCEMENT PLAN: PICTURES, GOALS & OBJECTIVES

Materia

Trace Wilson, Architect

Architecture Urbanism Landscape Planning Development

twilson@materia-lc.com
 t. 310.903.2635



ADJACENT NEIGHBORS
 LA JOLLA RECREATIONAL CENTER ENHANCEMENT PLAN: PICTURES, GOALS & OBJECTIVES

Materia

Trace Wilson, Architect

Architecture Urbanism Landscape Planning Development

twilson@materia-lc.com
 t: 310.903.2635



SCHEME A: BASKETBALL COURTS SOUTH
LA JOLLA RECREATIONAL CENTER ENHANCEMENT PLAN

Scale 1/8" = 1/32'

Materia
 Trace Wilson, Architect

Architecture Urbanism Landscape Planning Development
 twilson@materia-llc.com
 t 310.903.2635



SCHEME B: BASKETBALL COURTS EAST
LA JOLLA RECREATIONAL CENTER ENHANCEMENT PLAN

Scale 1"=132'

Materia

Trace Wilson, Architect

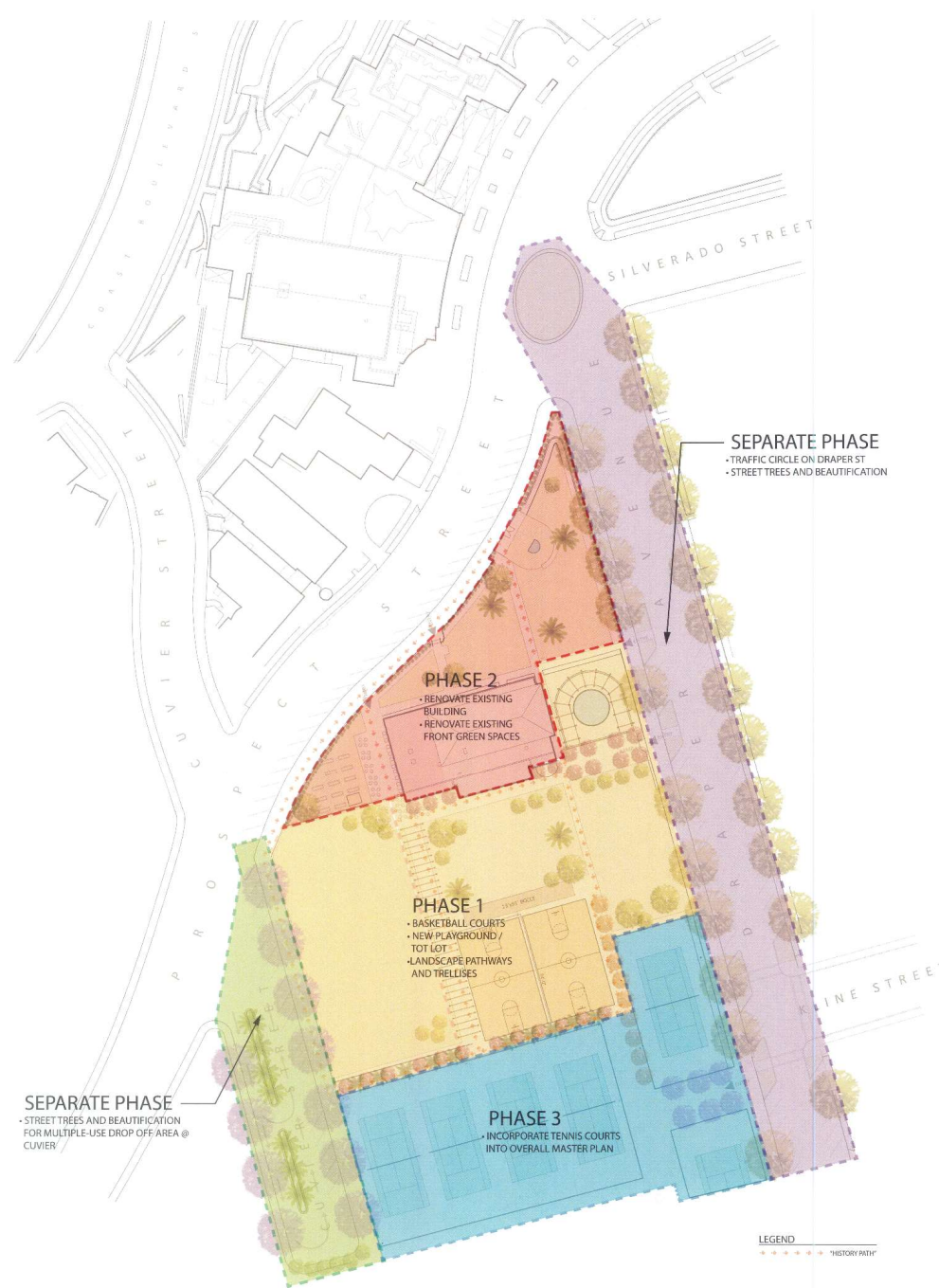
Architecture Urbanism Landscape Planning Development
twilson@materia-lc.com
t: 310.903.2835



SCHEME C: BASKETBALL COURTS SOUTH-WEST
LA JOLLA RECREATIONAL CENTER ENHANCEMENT PLAN

Materia
 Trace Wilson, Architect

Architecture Urbanism Landscape Planning Development
 twilson@materia-llc.com
 t. 310.903.2635



PHASING LOGIC
LA JOLLA RECREATIONAL CENTER ENHANCEMENT PLAN

Scale 1"=6' = 1/32"

Materia

Trace Wilson, Architect

Architecture Urbanism Landscape Planning Development

twilson@materia-llc.com
t. 310.903.2635



RECREATION CENTER ONLY
 SCHEME A - PARKING SECTIONS
 ENTER/EXIT CUVIER STREET

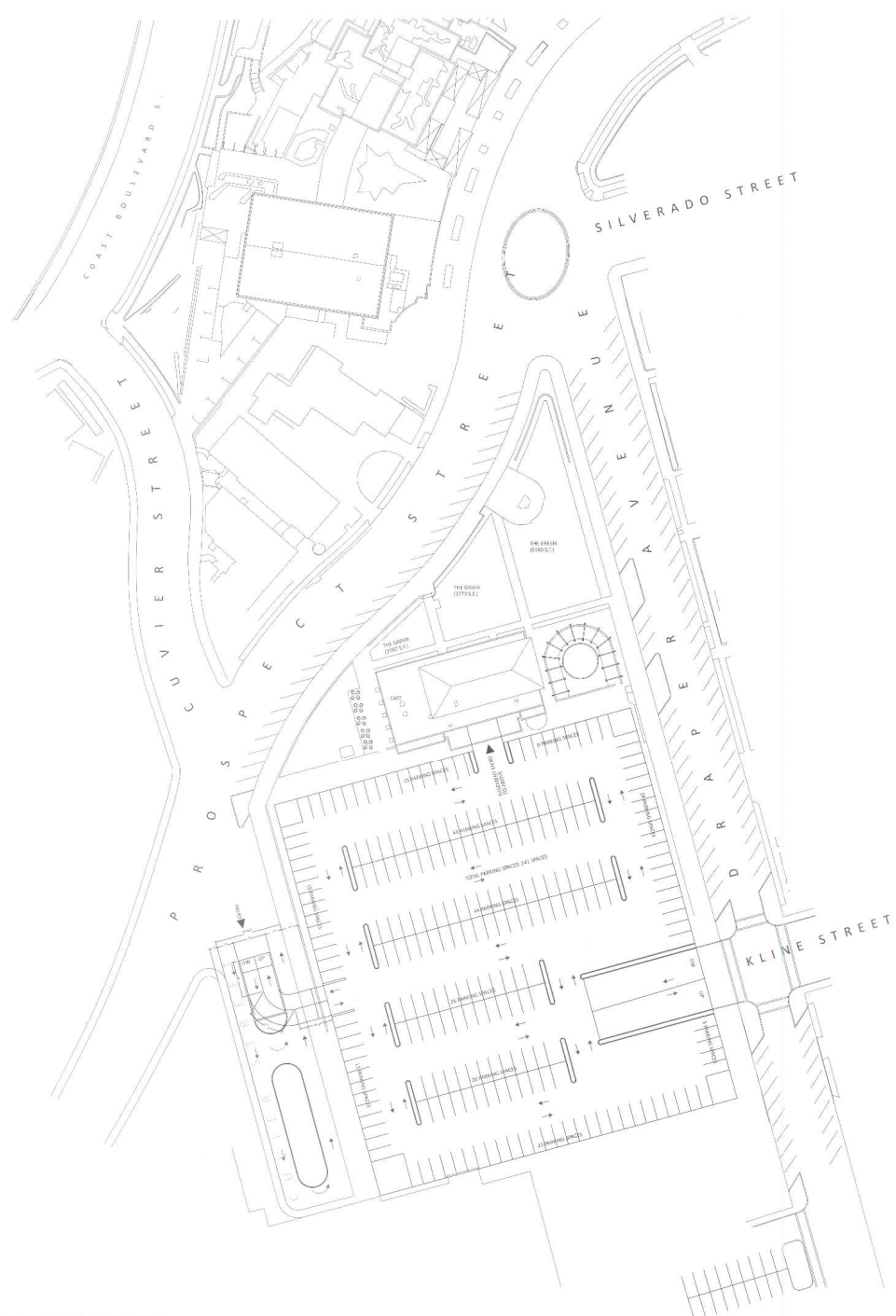
Scale 1"0" = 1/32"

Materia

Trace Wilson, Architect

Architecture Urbanism Landscape Planning Development

twilson@materia-llc.com
 t. 310.903.2635

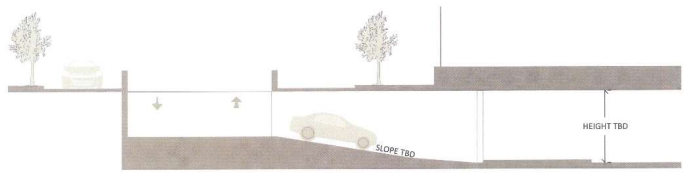


RECREATION CENTER ONLY
 SCHEME B - PARKING SECTIONS
 ENTER/EXIT CUIVIER STREET

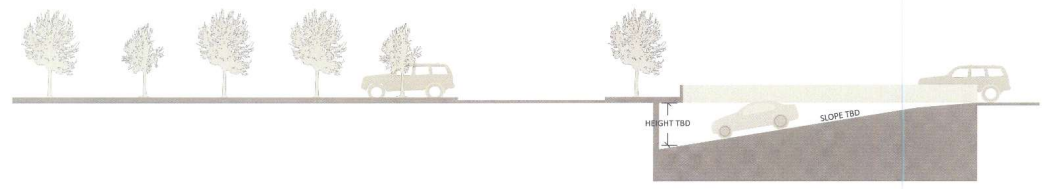
Scale 1" = 1/32'

Materia
 Trace Wilson, Architect

Architecture Urbanism Landscape Planning Development
 wilson@materia-llc.com
 t. 310.903.2835



SECTION B-B



SECTION A-A

RECREATION CENTER ONLY
 SCHEME A - PARKING SECTIONS
 ENTER/ EXIT CUVIER STREET

Scale 1" = 1/32"

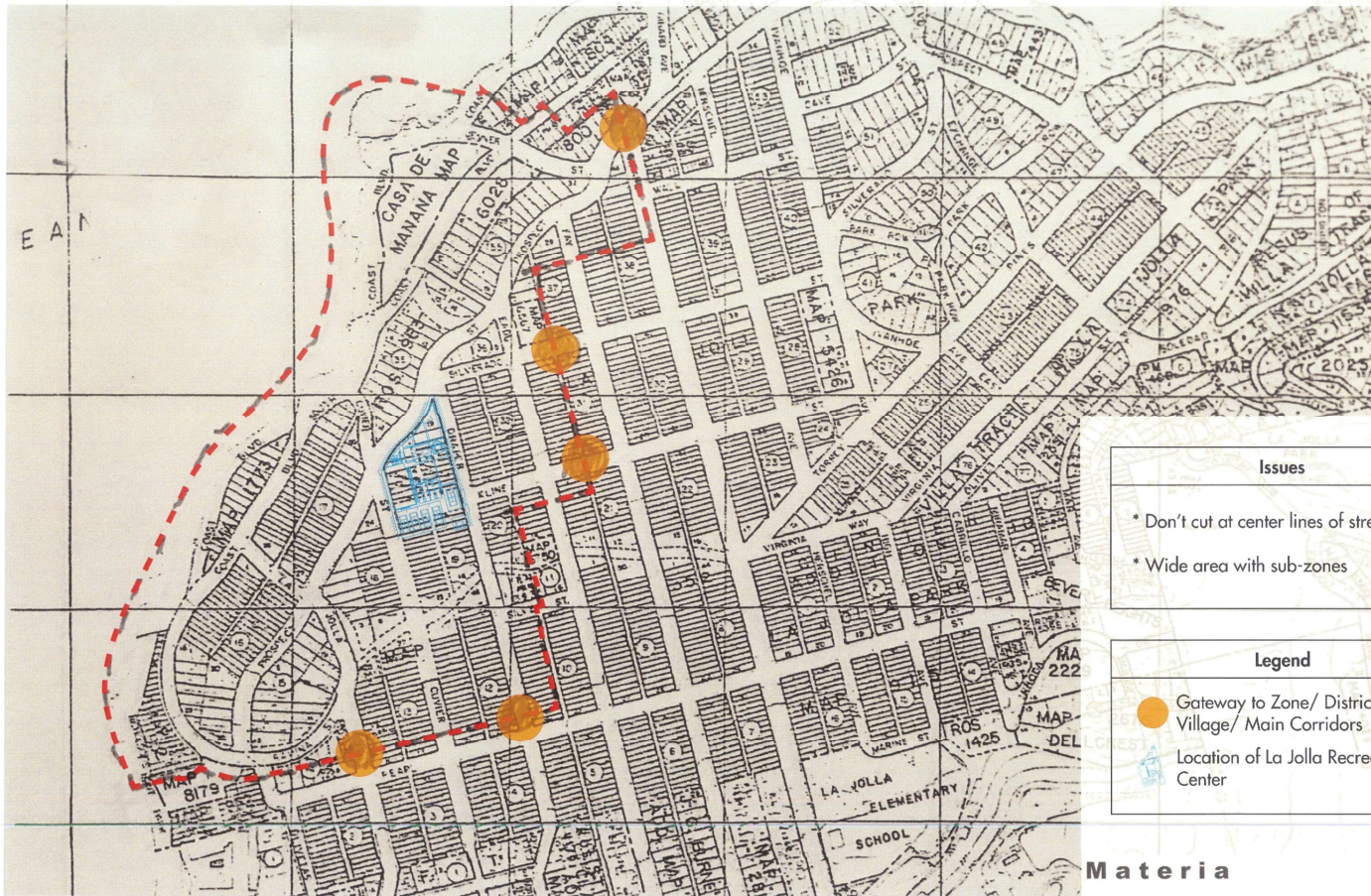
Materia

Trace Wilson, Architect

Architecture Urbanism Landscape Planning Development



twilson@materia-llc.com
 t. 310.903.2635

La Jolla California Cultural Zone Boundary Map



Scale: 1" = 200'

Issues	
* Don't cut at center lines of street.	
* Wide area with sub-zones	

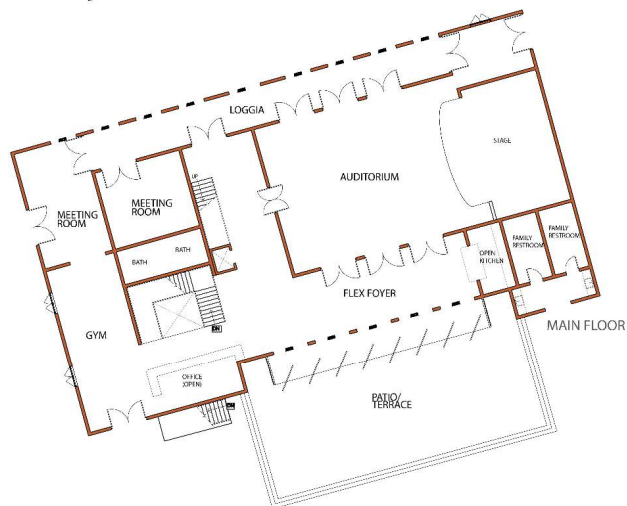
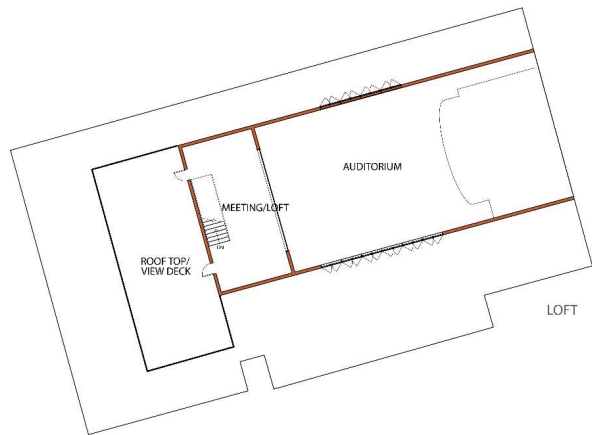
Legend	
	Gateway to Zone/ District from Village/ Main Corridors
	Location of La Jolla Recreational Center

Materia

Trace Wilson, Architect

Architecture Urbanism Landscape Planning Development

twilson@materia-lic.com



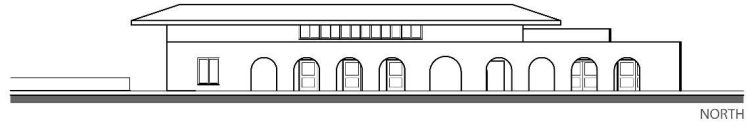
RECREATION CENTER ONLY
FLOOR PLANS

Materia

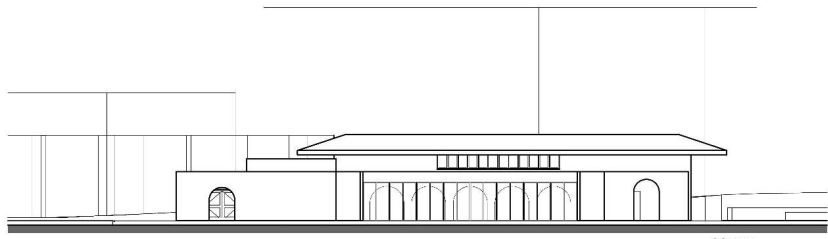
Trace Wilson, Architect

Architecture Urbanism Landscape Planning Development

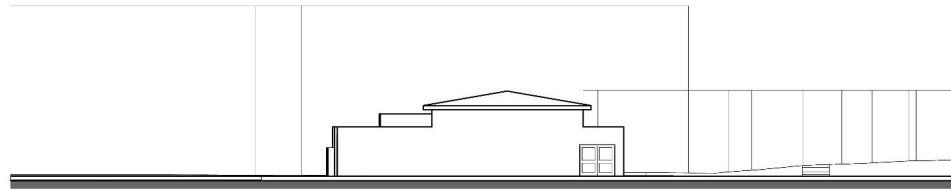
twilson@materia-llc.com
t. 310.903.2635



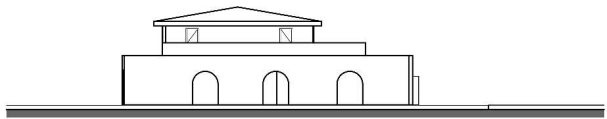
NORTH



SOUTH



EAST



WEST

RECREATION CENTER ONLY
ELEVATION

scale: 1/32" = 1'-0"

Materia

Trace Wilson, Architect

Architecture Urbanism Landscape Planning Development
twilson@materia-llc.com
t. 310.903.2635



LA JOLLA REC CENTER RENOVATION
EXISTING CONDITIONS

Materia

Trace Wilson, Architect

Architecture Urbanism Landscape Planning Development
twilson@materia-llc.com
1. 310.903.2635

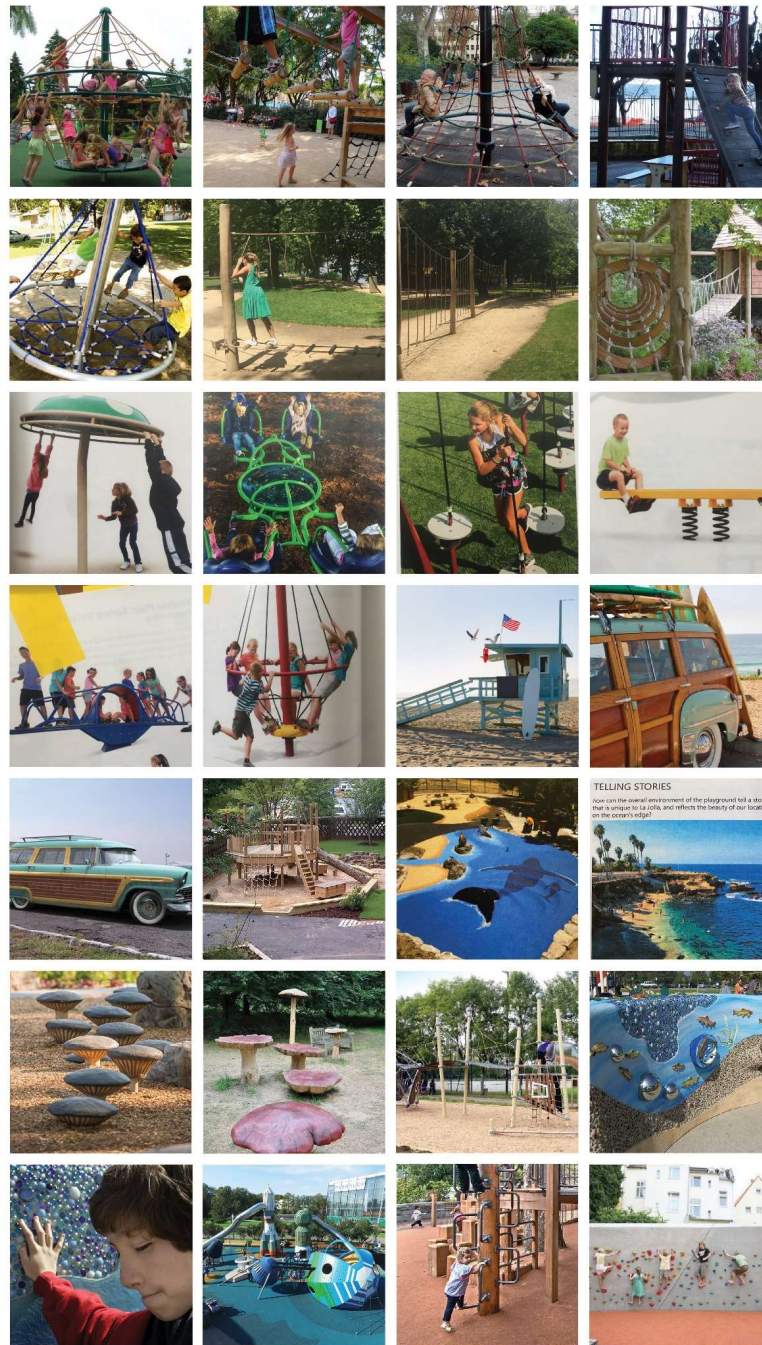


LA JOLLA REC CENTER RENOVATION
EXISTING CONDITIONS

Materia

Trace Wilson, Architect

Architecture Urbanism Landscape Planning Development
twilson@materia-llc.com
t. 310.903.2635



TELLING STORIES
 How can the overall environment of the playground tell a story that is unique to its site, and reflects the history of our location on the ocean's edge?

LA JOLLA REC CENTER RENOVATION
 PLAYGROUND INSPIRATION

Materia

Trace Wilson, Architect

Architecture Urbanism Landscape Planning Development

twilson@materia-llc.com
 t. 310.903.2635



LA JOLLA REC CENTER RENOVATION

BIRDS EYE

Materia

Trace Wilson, Architect

Architecture Urbanism Landscape Planning Development

twilson@materia-lc.com
t. 610.933.2635

OLIN

JENNIFER PHELPS, LANDSCAPE ARCHITECT
TODD FRY
LANDSCAPE ARCHITECTS
1970 Panama, La Jolla (619)449-0804



LA JOLLA REC CENTER RENOVATION

PERSPECTIVE

Materia

Trace Wilson, Architect

Architecture Urbanism Landscape Planning Development

twilson@materia-lc.com
t. 910.933.2635

OLIN

JENNIFER PHELPS, LANDSCAPE ARCHITECT
TODD FRY
LANDSCAPE ARCHITECTS
1970 Panama, La Jolla (619)449-0804



LA JOLLA REC CENTER RENOVATION
SITE PLAN

Materia

Trace Wilson, Architect

Architect: Mission Landscape Planning, Development
 info@missionlp.com
 T. 916.909.8200

OLIN

ISSNER FIELD LANDSCAPE ARCHITECTS
 1000 FIVE
 LANDSCAPE ARCHITECTS
 1100 Mission, San Diego, 92108-3400



LA JOLLA REC CENTER RENOVATION
MONSTRUM PLAYGROUNDS

Materia

Trace Wilson, Architect

Architecture Urbanism Landscape Planning Development

twilson@materia-llc.com
t. 310.903.2635



LA JOLLA REC CENTER RENOVATION
MONSTRUM PLAYGROUNDS
Materia

Trace Wilson, Architect

Architecture Urbanism Landscape Planning Development

twilson@materia-llc.com
t. 310.903.2635